

SCHWEBD-S9957

Shawl



Recommended Yarn

schachenmayr.com

©MEZ GmbH. 2016. All rights reserved





SCHWEBD-S9957

Shawl

v.1

Craft Skill Level 

Click the image for a full screen,
printable version

SIZE

About 170cm long and 80cm high.

MATERIALS

Schachenmayr Merino Extrafine 285 Lace, 50 g ball
col 00581 (cabernet) balls 4

More Yarn
Information

on [Schachenmayr.com](https://www.schachenmayr.com)

NEEDLES & NOTIONS

One Milward 3.75mm circular needle, two 3.75mm double-pointed needles, and one 3.5mm crochet hook.

ABBREVIATIONS

cm	centimetres
m	metres
mm	millimetres
st(s)	stitch(es)

GAUGE

21 sts and 42 rows in lace pattern (measured in direction of working) to 10cm.

Take time to check your gauge. If you have too many stitches and rows, switch to larger needles. If you have too few stitches and rows, switch to smaller needles.

THE BASICS

Garner selvaqe: at the beginning of every row slip the first stitch knitways with yarn at back of work; knit the last stitch at the end of every row.

Garner stitch: knit right side and wrong side rows.

Lace pattern: work in rows following Chart A and Chart B. The charts show the left side, work the right side in reverse, so that there are 2 centre stitches at the centre.

Read right side rows from right to left, and purl across the wrong side rows not shown all stitches and yarn-overs.

Arrange the stitches in height as given in the instructions.

Slip decrease over 2 stitches: slip 1 knitways, knit 1, pass slipped stitch over.

Slip decrease over 3 stitches: slip 2 together knitways, knit 1, pass the 2 slipped stitches over.

INSTRUCTIONS

With the crochet hook and a contrasting yarn cast on 5 chains. With one double-pointed needle pick up 5 sts with the original yarn across the back of the ch chain. Work 8 rows garter stitch, working the garter selvaqe. Pick up 4 sts across the left garter selvaqe. Then gradually remove the ch chain, and arrange the 5 sts on a double-pointed needle, then knit these 5 sts. Turn and knit across all stitches = 14 sts.

Turn and continue following Chart A. From the centre, see marker in chart, work in reverse.

In height work rows 1 to 62 once, then rows 37 to 62 another 4 times, automatically increasing the coloured section for each repeat. Then work rows 63 to 94, repeating the coloured panels.

Continue to the end following Chart B. Work rows 1 to 37 once; to make it easier Row 93 of Chart A is shown once more, but do not work this row again. Finally work another 3 rows garter stitch, start with a wrong side row, then cast off all stitches loosely.

TO MAKE UP

Block the shawl to measurements, cover with a damp cloth and allow to dry.

Chart A

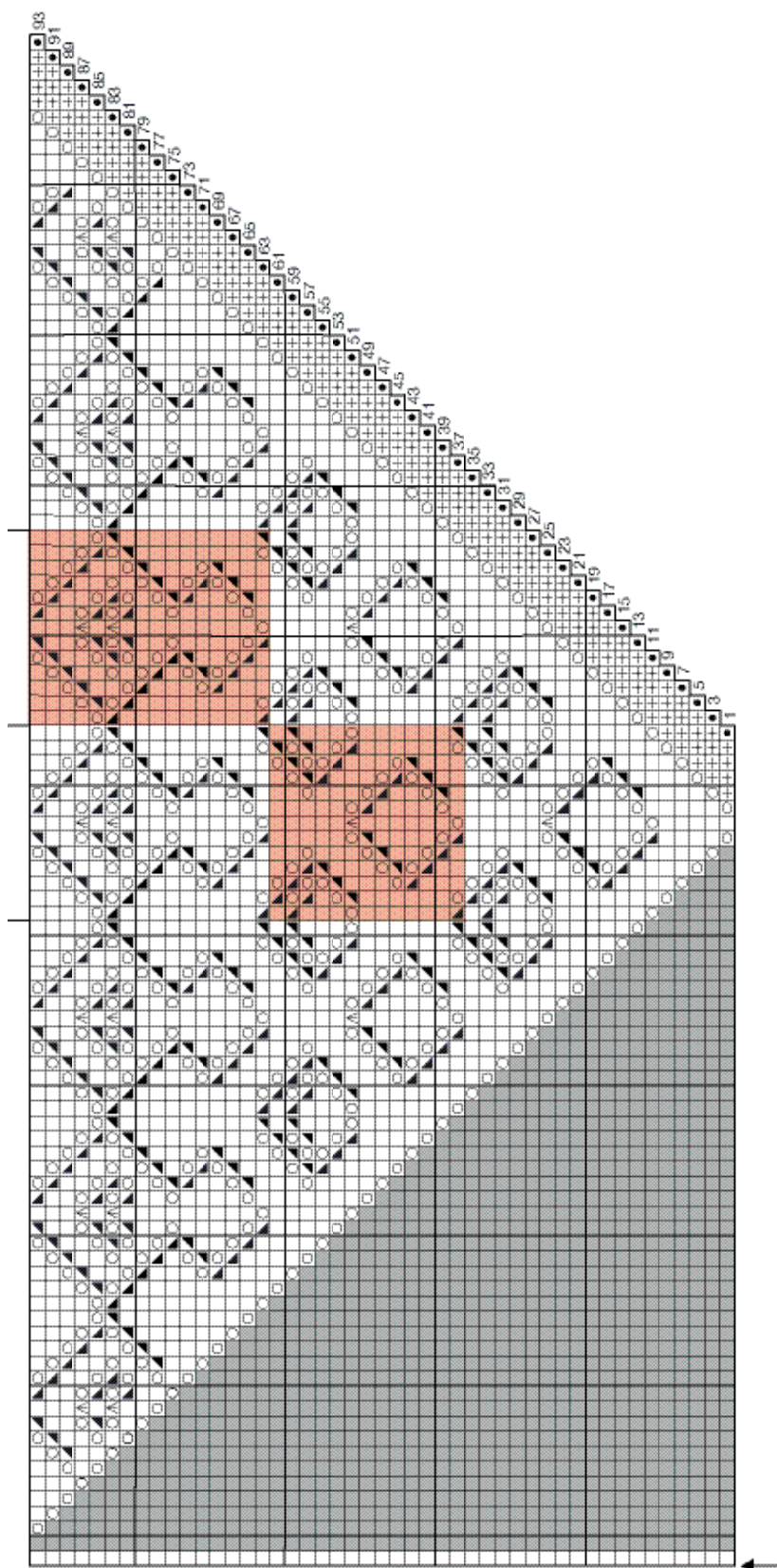
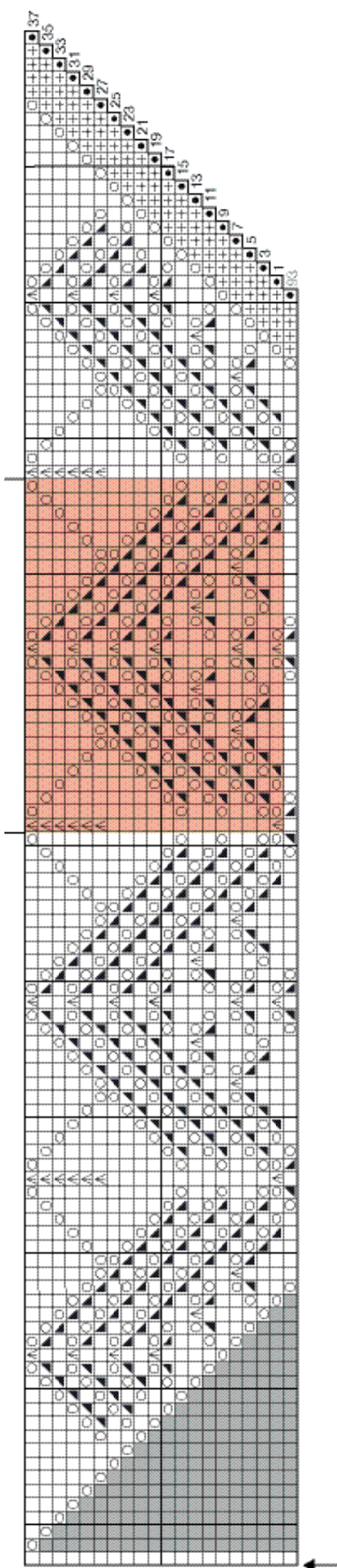










Chart B



Key

-  = garter selvage
-  = knit 1
-  = 1 st garter stitch = knit right side and wrong side rows
-  = 1 yarn-over
-  = knit 2 together
-  = slip decrease over 2 sts
-  = slip decrease over 3 sts
-  = ignore grey squares, these are construction markers only