



# Crochet Fruit

S8926







S8926

V.2/EW

# Crochet Fruit

**Design:** Beate Hilbig

Initial publication: October 2014



Crochet



Easy



Recommended yarn

## SIZE

### S8926 A, B - Apple

Height (without stem): 2" [5,5 cm], Circumference: 7" [18 cm]

### S8926 C - Bananas

Length: 6 1/2" [17 cm], Circumference: 3 1/2" [9 cm]

### S8926 D - Cherry

Diameter: [3 cm]

### S8926 E - Small butterflies

Length: [2,5 cm], Width: [3,5 cm]

## MATERIALS

**Schachenmayr Catania**, 50 g ball

100% cotton, about 125 m/50 g (1.75 oz ≈ 137 yds)

|                       |                        |
|-----------------------|------------------------|
| Col 00115 (signalrot) | small amount or 1 ball |
| Col 00205 (apfel)     | small amount or 1 ball |
| Col 00245 (anis)      | small amount or 1 ball |
| Col 00244 (agave)     | small amount or 1 ball |
| Col 00212 (khaki)     | small amount or 1 ball |
| Col 00162 (kaffee)    | small amount or 1 ball |
| Col 00189 (jaffa)     | small amount or 1 ball |
| Col 00280 (löwenzahn) | small amount or 1 ball |
| Col 00128 (fuchsia)   | small amount or 1 ball |
| Col 00208 (sonne)     | small amount or 1 ball |
| Col 00192 (weinrot)   | small amount or 1 ball |

crochet hook size US D-3 (3 mm)

tapestry needle for weaving in the ends

Seed beads, 2,6 mm, opaque in black for eyes of the worms

Polyfill stuffing

Yarn amounts are approximate. Make sure to purchase enough of the same dye lot in order to complete your project. The amount of yarn needed can vary from person to person.

## GAUGE

**Single Crochet:** 20 sc and 26 rnds = 4 x 4"/10 x 10 cm

Take time to check gauge, changing needle size if necessary.

## BASICS

**Main pattern:** Work sc in spiral rounds, placing a contrast color strand to mark the end of each round. When changing colors, work the last 2 loops of the last stitch with the new color.

## INSTRUCTIONS

### A B - Apple

Make 1 apple in Col. signalrot and one apple in Col. apfel as follows:



### APPEL

With desired color, make a yarn ring and work in Main pattern as follows. To increase 1 sc, work 2 sc in 1 sc. To decrease 1 stitch, insert hook in next st, yarn over and pull up a loop, insert hook in next st, yarn over and pull up a loop, yarn over and draw through all loops on hook.

**Rnd 1:** Ch 1 and work 10 sc into ring.

**Rnd 2:** Inc 1 sc in each sc = 20 sc.

**Rnd 3:** Sc in each sc.

**Rnd 4:** [Sc in 3 sc, inc 1 sc in next sc] 5 times = 25 sc.

**Rnd 5:** [Sc in 4 sc, inc 1 sc in next sc] 5 times = 30 sc.

**Rnd 6:** Sc in 2 sc, inc 1 sc in next sc, [sc in 5 sc, inc 1 sc in next sc] 4 times, sc in 3 sc = 35 sc.

**Rnd 7:** Sc in 3 sc, inc 1 sc in next sc, [sc in 6 sc, inc 1 sc in next sc] 4 times, sc in 3 sc = 40 sc.

**Rnds 8 - 17:** Sc in each sc.

**Rnd 18:** [Sc in 6 sc, dec 1 sc] 5 times = 35 sc.

**Rnd 19:** [Sc in 5 sc, dec 1 sc] 5 times = 30 sc.

**Rnd 20:** Sc in 2 sc, dec 1 sc, [sc in next 4 sc, dec 1 sc] 4 times, sc in 2 sc = 25 sc.

**Rnd 21:** Sc in 1 sc, dec 1 sc, [sc in 3 sc, dec 1 sc] 4 times, sc in 2 sc = 20 sc.

Stuff the apple.

**Rnd 22:** [Dec 1 sc] 10 times = 10 sc.



Cut yarn, leaving an end. Finish stuffing the apple. Weave the end through the last rnd, working through the back loops only, draw sts together and secure the end.

### LEAVES

Follow Charts 1 and 2. For the red apple make a large leaf with anis and for the apple green apple make 1 large and 1 small leaf with agave.

### STEM

For each apple, ch 9 with kaffee and work sl st in 2nd ch from hook and in each ch to end. Fasten off.

### LEAF BASE

For each apple, ch 2 with kaffee and work 4 hdc cluster in 2nd ch from hook. Cut yarn and pull through the last loop on the hook.

### WORM

For the **Body** make a round cord as follows: Ch 2 with jaffa and work 4 sc in 2nd ch from hook. Then work 3 rnds sc, working the rnd counter clockwise and working each stitch through the back loop. For the **Head** work one 5-hdc Popcorn in next sc, and after ending the last hdc, work the 1st and last st together. Cut yarn. Weave the end through the sts of the Popcorn, draw together and secure the end. Sew on eyes.

### FINISHING

Sew stem and leaf base to each apple pulling together lightly to form a vertical piece and create a typical apple form. Sew on the leaves to the stem and sew on the worm following the photo for placement.



### C - BANANA

**Rnd 1:** Ch 1 and work 8 sc into ring.

**Rnd 2:** Sc in each sc. Continue with sonne.

**Rnd 3:** [Sc in next sc, inc 1 sc] 4 times = 12 sc.

**Rnd 4:** [Sc in next sc, inc 1 sc] 6 times = 18 sc.

**Rnds 5 - 9:** Sc in each sc.

**Rnd 10:** [Sc in next 2 sc, inc 1 sc] 4 times, sc in next 6 sc = 22 sc.

**Rnds 11 - 25:** Sc in each sc.

**Rnd 26:** Sc in next 16 sc, [dec 1 sc] twice, sc in last 2 sc = 20 sc.

**Rnds 27 - 30:** Sc in each sc.

**Rnd 31:** Sc in next 16 sc, [dec 1 sc] twice = 18 sc.

**Rnds 32 and 33:** Sc in each sc.

**Rnd 34:** [Sc in next 2 sc, dec 1 sc] 4 times, sc in next 2 sc = 14 sc. Continue with kaffee.

**Rnd 35:** [Dec 1 sc] 7 times = 7 sc.

**Rnds 36 and 37:** Sc in each sc.

**Rnd 38:** Inc 1 sc, sc in next 3 sc, inc 1 sc, sc in 2 sc = 9 sc.

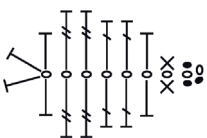
**Rnd 39:** Sc in each sc.

### FINISHING

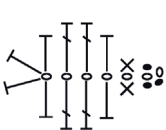
Cut yarn, stuff the banana and weave the end through the sts of the last rnd working into the back loops, draw sts together and secure the end. Sew in all ends. Work 2 other bananas in same way, and with chocolate sew the top edges together to form a bunch.

### CHARTS

#### Chart 1 for the large leaf



#### Chart 2 for the small leaf



### CHART KEY

- 0 = 1 chain
- = 1 slip stitch
- x = 1 single crochet
- | = half double crochet
- | = double crochet
- | = 1 treble crochet



## D - CHERRY

Make 1 cherry in signalrot and 1 cherry in weinrot.

### CHERRY

**Begin with a yarn ring and work as follows:**

**Rnd 1:** Ch 1, then work 8 sc into ring. **Rnd 2:** Work 2 sc in each dc = 16 sc. **Rnd 3** [Sc in next 3 sc, inc 1 sc] 4 times = 20 sc.

**Rnds 4 - 8:** Sc in each sc.

**Rnd 9:** [Sc in next 3 sc, dec 1 sc] 4 times = 16 sc. Stuff cherry.

**Rnd 10:** [Dec 1 sc] 8 times = 8 sc.

Cut yarn weave the end through the sts of the last rnd working into the back loops, draw sts together and secure the end.

### STEM AND LEAF

In leaf green ch 6 for the Leaf and ch 10 for the 1st Stem. Join the 1st cherry with the stem with 1 sl st in the top end of the cherry. Then from the cherry work 1 sc in each ch of the stem. At end of the ch, for the base of the stem, ch 3 and work sl st in the 2nd and 3rd ch from hook. The 6 ch from the leaf remains unworked. For the 2nd Stem ch 10. Join the 2nd cherry with the stem, by working 1 sl st in the top end of the cherry. Then from the cherry work 1 sl st in each ch of the 2nd stem.

Then join the stem to the height of the leaf with 1 sl st, with the ch of the eaves to the left, the stem base points to the right. Then in the 6 ch of the Leaves work 2 sc, 2 hdc, 1 sc and 1 sl st. Then ch 1 and working along the opposite side of the ch, work 1 sl st, 1 sc, 2 hdc and 2 sc. Attach the leaf to the stem with 1 sl st. Cut yarn and sew in ends.

### FINISHING

Make two pairs of cherries



## E - SMALL BUTTERFLY

### INSTRUCTIONS

Ch 1 loosely for the center st in löwenzahn or fuchsia and work as follows:

### SMALL LOWER WING

★ Ch 2, work 2 dc in center st, ch 2, 1 sl st in center st; rep from ★ once.

### LARGE TOP WING

★ Ch 3, 3 dc in center st, ch 3, 1 sl st in center st; rep from ★ once. Cut yarn and sew in ends.

### FINISHING

Embroider 4 - 5 overcast sts over the center st between the wings with one strand jaffa for the löwenzahn butterfly, one strand anis for the fuchsia butterfly.

For the head, knot the yarn end 3 times between the large wings. Cut the ends for the antenna.

### ABBREVIATIONES

|        |                       |
|--------|-----------------------|
| ch     | = chain               |
| Col.   | = Color(s)            |
| dc     | = double crochet      |
| dec    | = decrease            |
| hdc    | = half double crochet |
| inc    | = increase            |
| sc     | = single crochet      |
| sl st  | = slip stitch         |
| st(s)  | = stitch(es)          |
| rep    | = repeat              |
| rnd(s) | = round(s)            |