



SCHWEBD-S10069

Shawl



Recommended Yarn

schachenmayr.com

Follow us     

MEZ GmbH, 2017. All rights reserved.





SCHWEBD-S10069

V.1/BW/IW

Shawl

Design: Schachenmayr Design Team

Knit

Intermediate



SIZE

Length: approx. 200 cm

Width: approx. 40 cm

MATERIAL

Schachenmayr Merino Extrafine 285 Lace, 50 g ball

Color 00592 (flanel melange) 4 balls

50 g = 285 m

Yarn amounts are approximate. Make sure to purchase enough of the same dye lot in order to complete your project.

Size 3 mm circular needle

Cable needle [cn]

Stitch marker

Blunt yarn needle for weaving in ends

TENSION

In garter stitch:

27 sts and 54 rows = 10 x 10 cm

THE BASICS

Garter st:

K every row.

Stockinette:

K on RS, p on WS.

Increasing 1 stitch [k1f&b]:

Knit next st as you would normally, but leave st on the left needle. Knit into the back of the same st, then slip the st from the left needle. You now have 2 sts on the right needle.

Wrap and turn (w&t):

Bring yarn to front of work between needles. Slip next st to right needle and take the yarn to the back of the work, wrapping the yarn in front of the stitch. Slip stitch back to left needle. Turn and work next row.

Picking up wraps:

Insert right needle into the wrap from below and from front to back, then into the stitch that is wrapped and knit the two together.

Slipping 2 stitches (sl2pwyif):

Bring yarn to front of work and slip next 2 sts as if to purl.

6-stitch cable:

Sl 3 sts to cn and hold in front of work, k3, then k3 from cn.

Charts A, B and C:

Numbers at right edge of charts indicate RS rows, numbers at left edge of charts indicate WS rows.

Chart A: Work rows 1 – 52 once, then repeat rows 37 – 52 throughout.

Chart B: Repeat rows 53 – 68 throughout.

Chart C: Work rows 69 – 100 once.

INSTRUCTIONS

Shawl is worked side to side, beginning with edging at left edge of work.

Edging is shaped with short-rows to create a curved shape.

Right edge of shawl is shaped with increases and decreases which creates a triangular shape.

With circular needle, cast on 27 sts and work according to **chart A** as foll:

Row 1 [RS]: K3, p22, sl2pwyif = 27 sts.

Row 2 [WS short-row]: K1tbl, k23, w&t = 24 sts.

Row 3 [RS]: P22, sl2pwyif = 24 sts.

Row 4 [WS]: K1tbl, k23, pick up wrap, k2 = 27 sts.

Row 5 [RS]: K1f&b twice = 4 sts, k23, sl2pwyif = 29 sts.

Row 6 [WS short-row]: K1tbl, k1, p22, wrap&turn = 24 sts.

Row 7 [RS]: K22, sl2pwyif = 24 sts.

Row 8 [WS]: K1tbl, k1, p22, pick up wrap, k1, p2, k1 = 29 sts.

Row 9 [RS]: K1f&b 3 times = 6 sts, p1, k1, p22, sl2pwyif = 32 sts.

Row 10 [WS]: Work same as row 2.

Row 11 [RS]: Work same as row 3.

Row 12 [WS]: K1tbl, k23, pick up wrap, k1, p4, k2 = 32 sts.

Row 13 [RS]: K1f&b = 2 sts, p1, k1f&b = 2 sts, k1, k1f&b = 2 sts, k1, p1, k23, sl2pwyif = 35 sts.

Row 14 [WS]: Work same as row 6.

Row 15 [RS]: Work same as row 7.

Row 16 [WS]: K1tbl, k1, p22, pick up wrap, k1, p6, k3 = 35 sts.

Row 17 [RS]: K2, p1, 6-st cable, p1, k1, p22, sl2pwyif = 35 sts.

Row 18 [WS]: Work same as row 2.

Row 19 [RS]: Work same as row 3.

Row 20 [WS]: K1tbl, k23, pick up wrap, k1, p6, k3 = 35 sts.

Row 21 [RS]: K1, k1f&b = 2 sts, p1, k6, p1, k23, sl2pwyif = 36 sts.

Row 22 [WS]: Work same as row 6.
Row 23 [RS]: Work same as row 7.
Row 24 [WS]: K1tbl, k1, p22, pick up wrap, k1, p6, k4.
Row 25 [RS]: K3, p1, 6-st cable, p1, k1, p22, sl2pwyif = 36 sts.
Row 26 [WS]: Work same as row 2.
Row 27 [RS]: Work same as row 3.
Row 28 [WS]: K1tbl, k23, pick up wrap, k1, p6, k4.
Row 29 [RS]: K2, k1f&b = 2 sts, p1, k6, p1, k23, sl2pwyif = 37 sts.
Row 30 [WS]: Work same as row 6.
Row 31 [RS]: Work same as row 7.
Row 32 [WS]: K1tbl, k1, p22, pick up wrap, k1, p6, k5.
Row 33 [RS]: K4, p1, 6-st cable, p1, k1, p22, sl2pwyif = 37 sts.
Row 34 [WS]: Work same as row 2.
Row 35 [RS]: Work same as row 3.
Row 36 [WS]: K1tbl, k23, pick up wrap, k1, p6, k1, place marker, k4.
Note: Always slip marker to right needle as you come to it.
Row 37 [RS]: Knit to 1 st before marker, k1f&b = 2 sts, p1, k6, p1, k23, sl2pwyif.
Row 38 [WS]: Work same as row 6.
Row 39 [RS]: Work same as row 7.
Row 40 [WS]: K1tbl, k1, p22, pick up wrap, k1, p6, knit to end.
Row 41 [RS]: Knit to marker, p1, 6-st cable, p1, k1, p22, sl2pwyif.
Row 42 [WS]: Work same as row 2.
Row 43 [RS]: Work same as row 3.
Row 44 [WS]: K1tbl, k23, pick up wrap, k1, p6, knit to end.
Row 45 [RS]: Knit to 1 st before marker, k1f&b = 2 sts, p1, k6, p1, k23, sl2pwyif.
Row 46 [WS]: Work same as row 6.
Row 47 [RS]: Work same as row 7.
Row 48 [WS]: K1tbl, k1, p22, pick up wrap, k1, p6, knit to end.
Row 49 [RS]: Knit to marker, p1, 6-st cable, p1, k1, p22, sl2pwyif.
Row 50 [WS]: Work same as row 2.
Row 51 [RS]: Work same as row 3.
Row 52 [WS]: K1tbl, k23, pick up wrap, k1, p6, knit to end = 39 sts.
 Repeat rows 37 – 52 (= 16 rows) until 131 sts are on the needle and shawl measures approx. 110 cm along right edge.
 Next, work according to **chart B** as foll:
Row 53 [RS]: Work to 2 sts before marker, k2tog, p1, k6, p1, k23, sl2pwyif.
Row 54 [WS]: Work same as row 6.
Row 55 [RS]: Work same as row 7.
Row 56 [WS]: K1tbl, k1, p22, pick up wrap, k1, p6, knit to end.
Row 57 [RS]: Knit to marker, p1, 6-st cable, p1, k1, p22, sl2pwyif.

Row 58 [WS]: Work same as row 2.
Row 59 [RS]: Work same as row 3.
Row 60 [WS]: K1tbl, k23, pick up wrap, k1, p6, knit to end.
Row 61 [RS]: Knit to 2 sts before marker, k2tog, p1, k6, p1, k23, sl2pwyif.
Row 62 [WS]: Work same as row 6.
Row 63 [RS]: Work same as row 7.
Row 64 [WS]: K1tbl, k1, p22, pick up wrap, k1, p6, knit to end.
Row 65 [RS]: Knit to marker, p1, 6-st cable, p1, k1, p22, sl2pwyif.
Row 66 [WS]: Work same as row 2.
Row 67 [RS]: Work same as row 3.
Row 68 [WS]: K1tbl, k23, pick up wrap, k1, p6, knit to end.
 Repeat rows 53 – 68 (= 16 rows) until 39 sts remain on the needle.
 Next, work according to **chart C** as foll:
Row 69 [RS]: Knit to 2 sts before marker, k2tog, p1, k6, p1, k23, sl2pwyif = 38 sts.
Row 70 [WS]: Work same as row 6.
Row 71 [RS]: Work same as row 7.
Row 72 [WS]: K1tbl, k1, p22, pick up wrap, k1, p6, knit to end.
Row 73 [RS]: Knit to marker, p1, 6-st cable, p1, k1, p22, sl2pwyif = 38 sts.
Row 74 [WS]: Work same as row 2.
Row 75 [RS]: Work same as row 3.
Row 76 [WS]: K1tbl, k23, pick up wrap, k1, p6, knit to end.
Row 77 [RS]: Knit to 2 sts before marker, k2tog, p1, k6, p1, k23, sl2pwyif = 37 sts.
Row 78 [WS]: Work same as row 6.
Row 79 [RS]: Work same as row 7.
Row 80 [WS]: K1tbl, k1, p22, pick up wrap, k1, p6, knit to end.
Row 81 [RS]: Knit to marker, p1, 6-st cable, p1, k1, p22, sl2pwyif.
Row 82 [WS]: Work same as row 2.
Row 83 [RS]: Work same as row 3.
Row 84 [WS]: K1tbl, k23, pick up wrap, k1, p6, knit to end.
Row 85 [RS]: Knit to 2 sts before marker, k2tog, p1, k6, p1, k23, sl2pwyif = 36 sts.
Row 86 [WS]: Work same as row 6.
Row 87 [RS]: Work same as row 7.
Row 88 [WS]: K1tbl, k1, p22, pick up wrap, k1, p6, knit to end.
Row 89 [RS]: Knit to marker, p1, 6-st cable, p1, k1, p2, sl2pwyif.
Row 90 [WS]: Work same as row 2.
Row 91 [RS]: Work same as row 3.
Row 92 [WS]: K1tbl, k23, pick up wrap, k1, p6, k3. Remove marker.
Row 93 [RS]: K2tog, k1, p1, k2tog, k2, k2tog, p1, k23, sl2pwyif = 33 sts.

Row 94 [WS]: Work same as row 6.

Row 95 [RS]: Work same as row 7.

Row 96 [WS]: K1tbl, k1, p22, pick up wrap, k1, p4.

Row 97 [RS]: K2tog, p1, k2tog twice, p1, k1, p22, sl2pwyif
= 30 sts.

Row 98 [WS]: Work same as row 2.

Row 99 [RS]: Work same as row 3.

Row 100 [WS bind-off row]: K1tbl, k23, pick up wrap, k2tog
3 times and at same time, bind off all sts.

ABBREVIATIONS

k	= knit
p	= purl
RS	= right side
st(s)	= stitch(es)
tbl	= through back loop
tog	= together
WS	= wrong side

FINISHING

Pin shawl to measurements and block.

Carefully weave in all ends.

Chart B

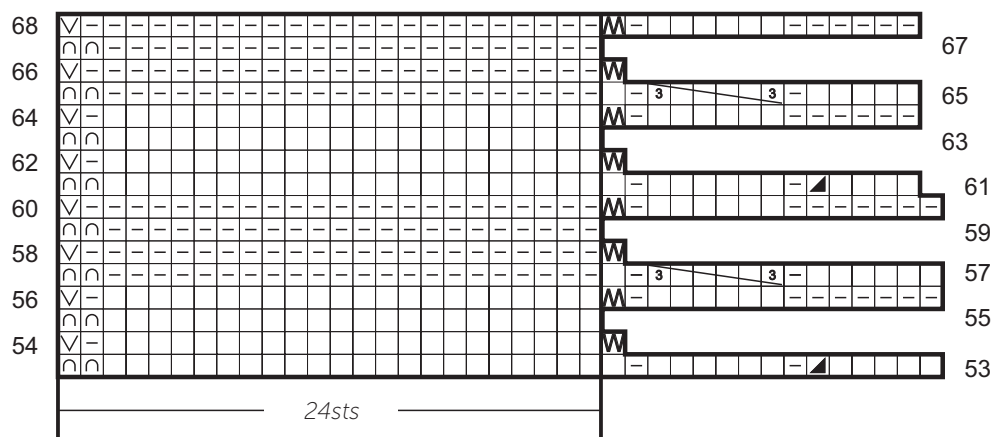


Chart A

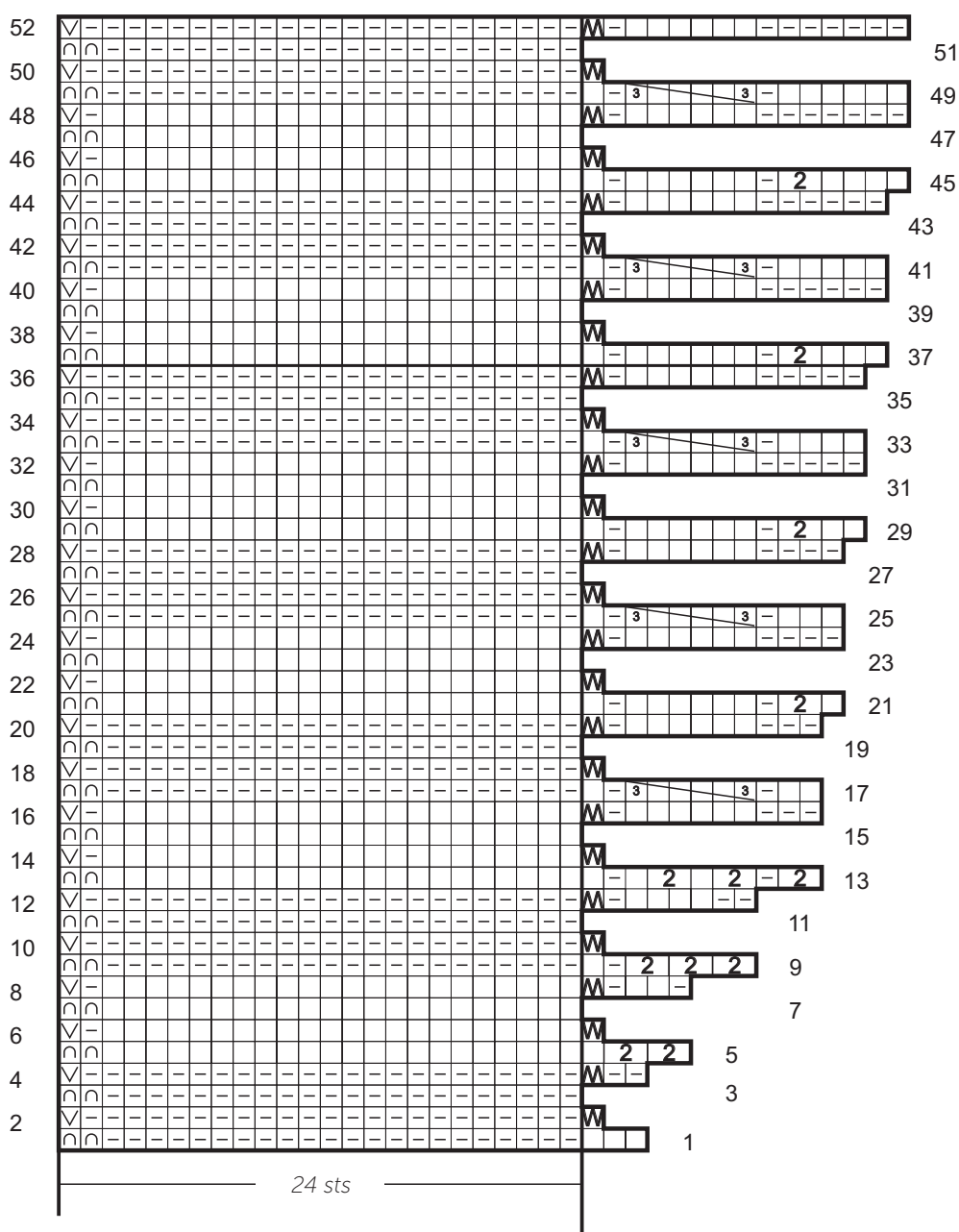


Chart C

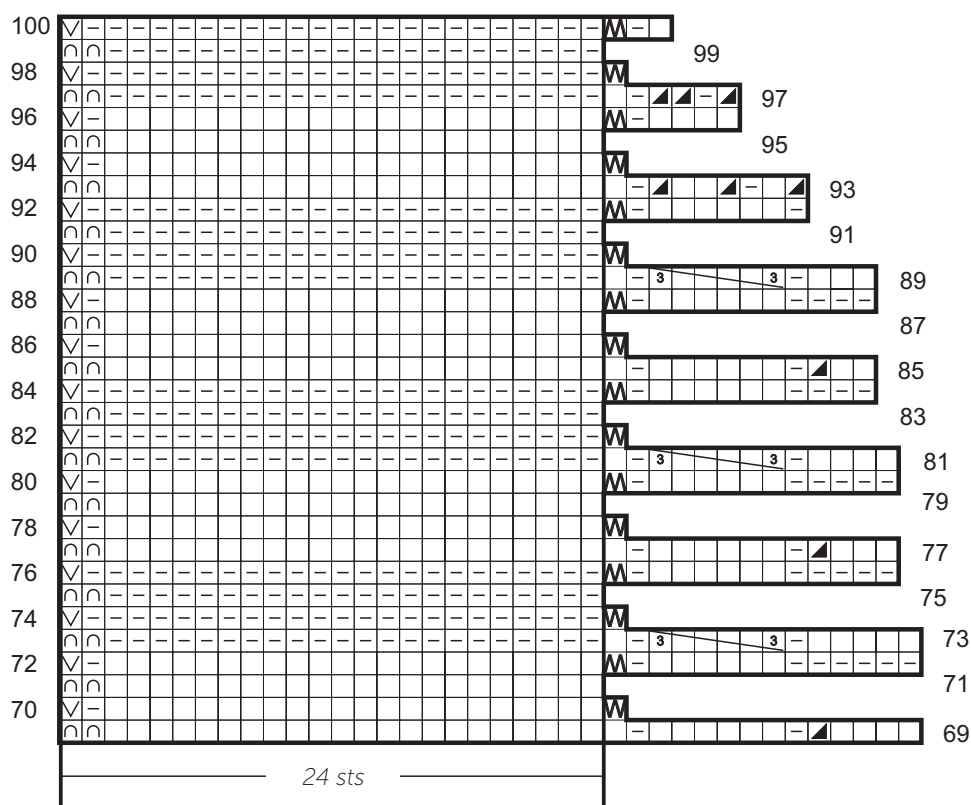





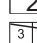





Chart key

-  = k1 on RS, p1 on WS
-  = p1 on RS, k1 on WS
-  = slip 2 sts with yarn in front
-  = k1tbl
-  = wrap&turn (w&t)
-  = pick up wrap
-  = k1f&b
-  = 6-st cable
-  = k2tog