

Schachenmayr 
SINCE 1822
REGIA PREMIUM

R0011

SOCKS WITH
INVISIBLE CAST



schachenmayr.com

Follow us     

MEZ GmbH, 2019. All rights reserved.





R0011

SOCKS WITH INVISIBLE CAST

Design: Schachenmayr Designteam

V.1/ES

Knitting



Expert



SIZE

38/39

MATERIALS

REGIA PREMIUM Silk, 100 g ball

approx. 100 g = 400 m

Col. 00060 (pastell turquoise) 1 ball

2-3 mm double-pointed needles

THE BASICS

Invisible cast on in rounds:

with a contrasting waste thread cast on half the number of sts required evenly across 4 double-pointed needles, then cont with the original yarn.

Round 1: alt K1, yarn-over.

Round 2: alt slip 1 purlways yarn at back of work and P foll yarn-over.

Round 3: alt K1, slip next purl st purlways.

Round 4: alt slip 1 purlways (yarn at back of work), P1.

Round 5: ★K1, slip 1 onto a CN and leave at back of work, K1, then P1 from CN, P1, rep from ★.

Then work alt K2, P2; after a few rounds remove the contrasting thread.

Rib pattern:

alt K2, P2

Stocking stitch:

in rounds knit all sts; in rows knit RS rows, and purl WS rows.

Basic pattern:

on odd rounds work foll Chart; work Cable between markers A and B 2 times, from marker B to marker C once, and Cable from marker A to B 2 times; on even rounds work sts as they appear.

Rep rounds 1-16 throughout for patt.

GAUGE

on 2-3mm needles and Basic Pattern:

32 sts and 42 rounds = 10 x 10 cm

In case of different mesh samples always thicker or use thinner knitting needles.

INSTRUCTIONS

with the invisible method cast on 60 sts and work 3 cm Rib Patt. Then knit 1 round inc 8 sts evenly across = 68 sts and 17 sts on each needle.

Cont in Basic Pattern.

When work measures 18 cm work foot as given in Sock Guide at www.schachenmayr.com.

Work heel with heel flap in open rows and st-st across on Needles 1 and 4; on 1st row K2 tog evenly across 4 times = 30 heel sts. Cont in st-st across Needles 1 and 4, and in Basic Patt to toes over the 34 sts on Needles 2 and 3.

When foot measures 20 cm start toe shaping as foll: knit 1 round, working K2 tog 2 times across Needles 2 and 3 = 15 sts on each needle, then work toe bands in st-st. Work both socks alike.

You will find a socks guide and a size table for socks under the number R0333 at schachenmayr.com

CHART

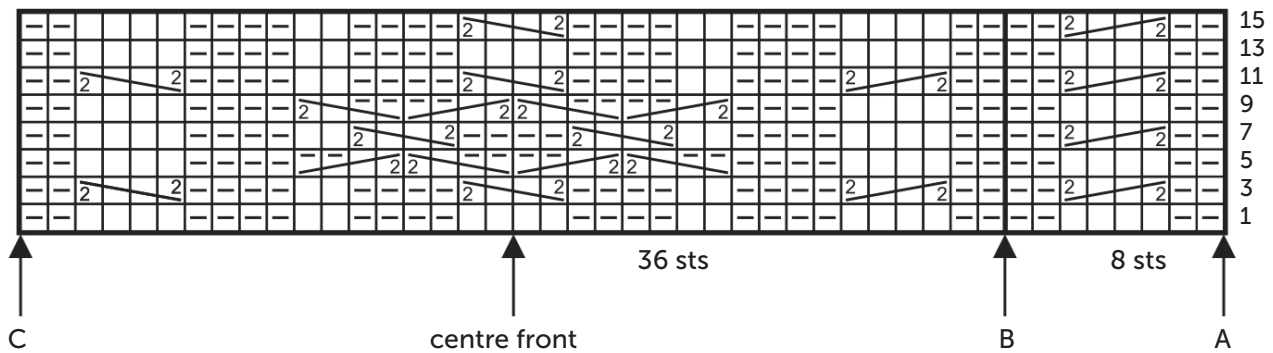






CHART KEY

- = K1
 □ = P1
 = slip 2 onto a CN and leave at front of work, K2, then K2 from CN
 = slip 2 onto a CN and leave at back of work, K2, then K2 from CN
 = slip 2 onto a CN and leave at front of work, P2, then K2 from CN
 = slip 2 onto a CN and leave at back of work, K2, then P2 from CN

ABBREVIATIONS

- | | |
|-------|-------------------|
| CN | = cable needle |
| cont | = continue |
| foll | = follows/ing |
| K | = knit |
| P | = purl |
| patt | = pattern |
| rep | = repeat |
| RS | = right side |
| st(s) | = stitch(es) |
| st-st | = stocking stitch |
| WS | = wrong side |
| tog | = together |

Sizing charts can be found at Tips & Tricks at www.schachenmayr.com.